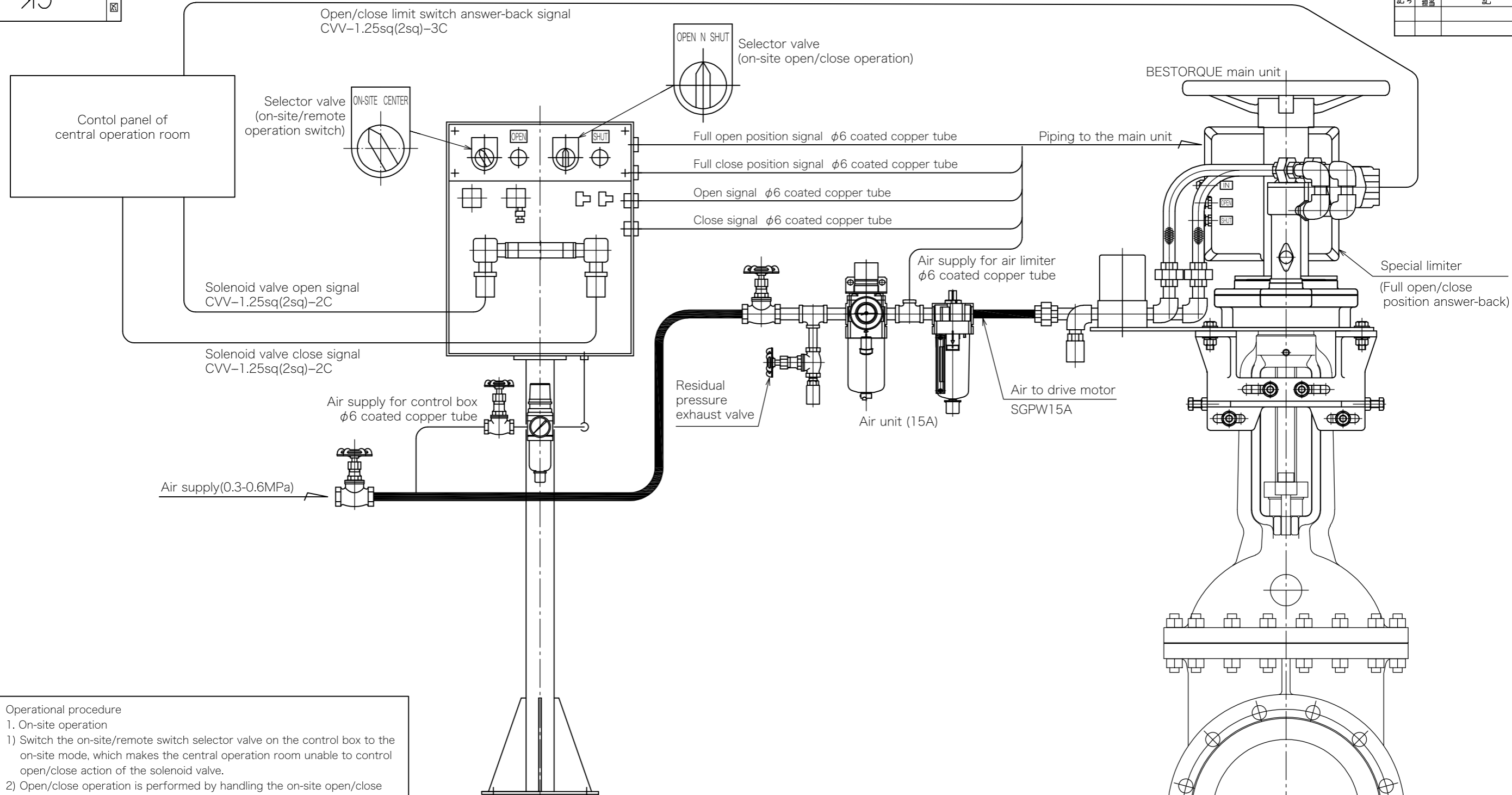


CK

機図

図面来歴	
記号	内容



**Operational procedure**

1. On-site operation
  - 1) Switch the on-site/remote switch selector valve on the control box to the on-site mode, which makes the central operation room unable to control open/close action of the solenoid valve.
  - 2) Open/close operation is performed by handling the on-site open/close operation selector valve.
2. Remote control
  - 1) Switch the on-site/remote switch selector valve on the control box to the remote mode, which makes on-site operation function disabled.
  - 2) Open/close operation is performed by the action of solenoid valve according to open/close electric signals from the central operation room.
3. Common procedure
  - 1) When the valve reaches the fully open or closed position, the air limiter built in Bestorque main unit transmits an answer-back signal, and the automatic stop device installed in the control box automatically stops the actuator.
  - 2) Simultaneously, the air lamp indicator for full open/close position on the control box turns on.
  - 3) The explosion-proof limiter built in the actuator also sends a full open/-close position answer-back signal to the central operation room.

TYPE D-1 for on-site operation / remote control

機名 図名	ベストールク 接続参考図	承認 杉岡	照査 杉岡	担当 上田	作成 上田	20.11.11	20.11.11	20.11.11	20.11.11
	外番 図番								

CK